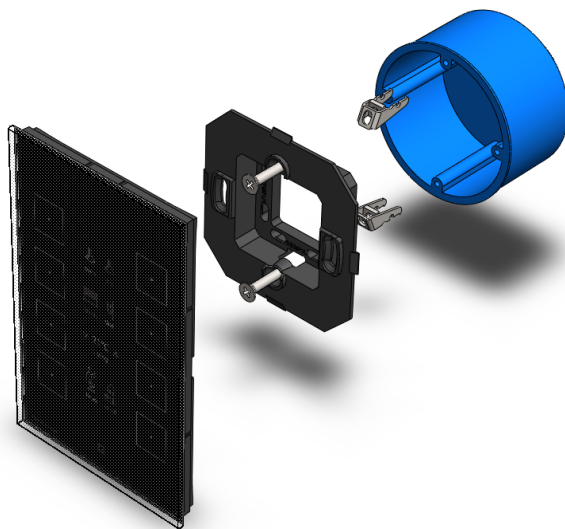


# AURUS-OLED

## INSTALLATION MANUAL

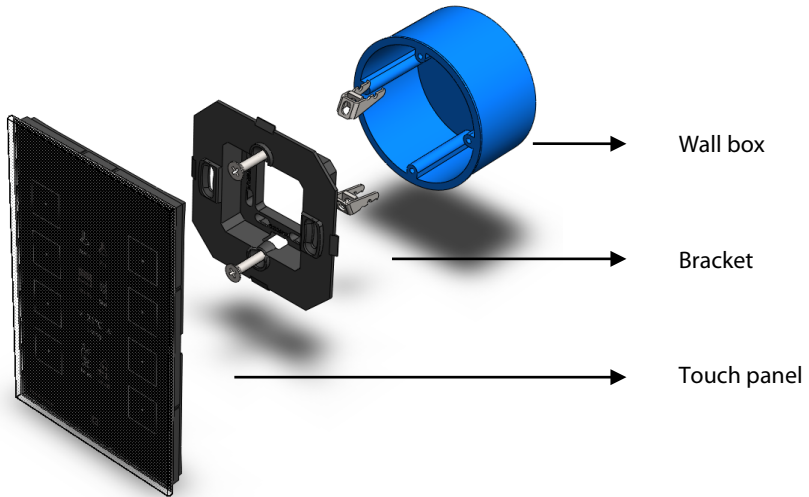
EN



## Introduction

EN

This manual will quickly guide you through the installation of an AURUS-OLED touch panel. As usual with TELETASK input interfaces, the basic installation is done within a few minutes. But as the AURUS-OLED is able to control some of the most advanced features within a TELETASK project, this guide will reveal the possible options of this domotic 'book'.



The design of the AURUS-OLED enables you to place the touch panel both vertical as horizontal. The choice is up to you or your customer!

**If needed, the orientation of the AURUS-OLED is very easy to change. It is done by changing one  selection in your PROSOFT project file (.nbt).**

**You don't need to remove the bracket as it has been designed to both hold a horizontal as well as a vertical AURUS-OLED.**

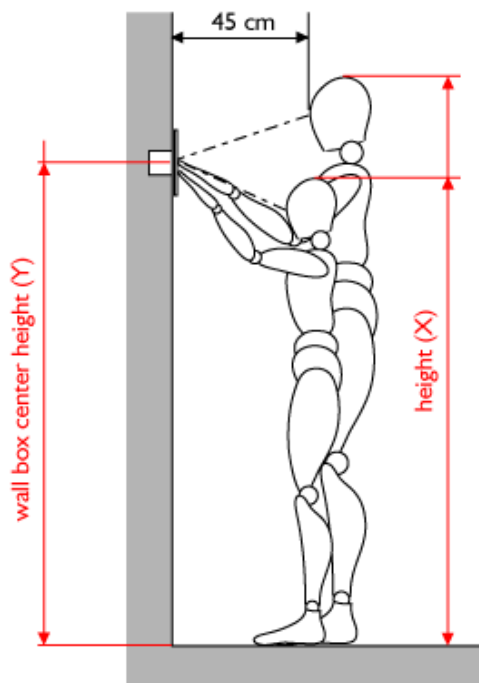
**Please follow the correct instructions on how to detach the AURUS-OLED from its bracket.**

Connecting the AURUS-OLED to the AUTOBUS can be done using the supplied AUTOBUS connector set. Lead the AUTOBUS connector through the wall-bracket, into the AUTOBUS connector on the AURUS-OLED.

**Don't forget to set the AUTOBUS address before positioning. This is done through the TENS & UNITS rotary switches at the back of the AURUS-OLED.**

## Installation height

EN



X	Age	Y	Z
115<X<125	(6)	90	140
125<X<135	(8)	105	155
135<X<145	(10)	115	170
145<X<155		125	
<b>155&lt;X&lt;165</b>		<b>135</b>	
<b>165&lt;X&lt;175</b>		<b>145</b>	
175<X<185		155	
185<X<195		165	
195<X<205		175	

All values in cm

**Z = maximum reach height.**

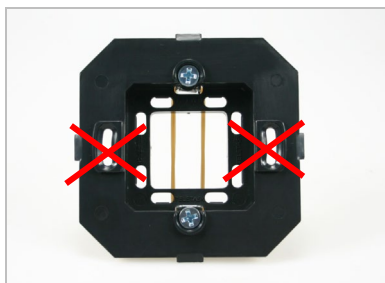
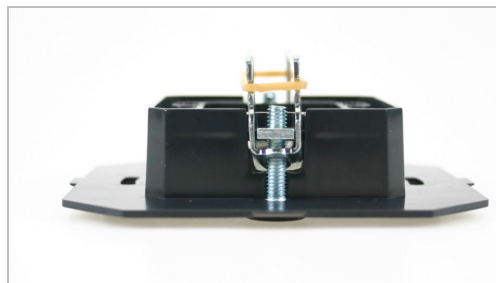
**Example:** When the display is positioned at 140cm, in average children at 6 years or older will be able to reach the touch control.

**Remark:** To be able to control the touch panel from out of a wheelchair, the wall box height (Y) should not be higher than 90cm.

## Claws

EN

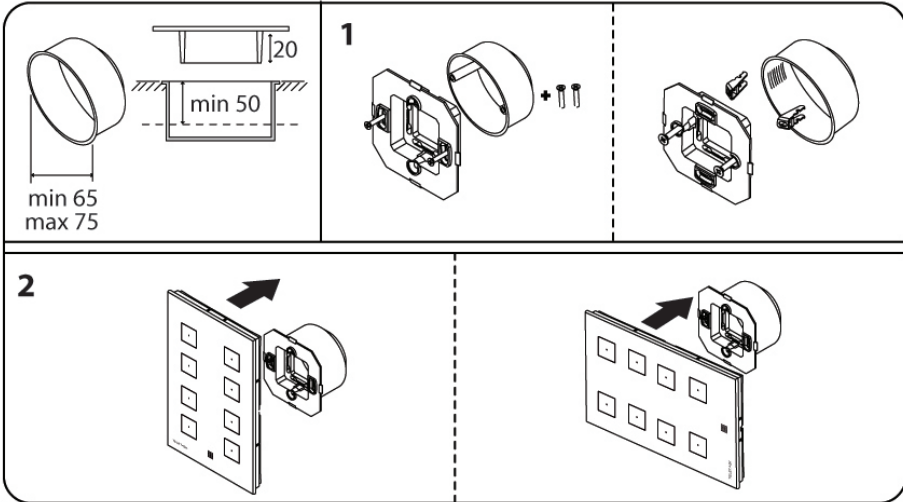
To assemble the supplied claws correctly, you should use the round holes in the wall bracket, NOT the (oval) longer holes as seen on these pictures:



Mounting

EN

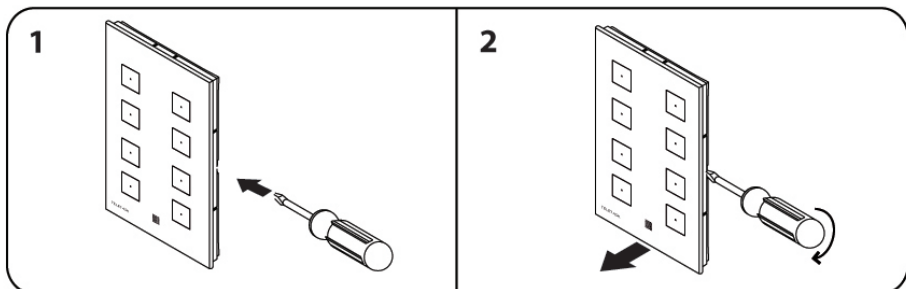
Wall boxes with build-in screws at 60mm distance from each other, can be used to mount the AURUS-OLED. In case your wall box does not have screws, you can use the provided claws.



RECOMMENDED wall boxes: TDS90000 and TDS90000PB. The TDS90000 is used in brick walls, while the TDS90000PB is used in plaster board or wood panel walls.

Demounting

EN



To remove the AURUS-OLED out of his wall bracket, place a flat screw driver into the holes at the sides of the AURUS-OLED. The wall bracket is provided with two clips which protect the wall during this action! Do not remove the AURUS-OLED by pulling the glass front panel, or warranty will void.