



TDS12142xx

Proximity reader

The TELETASK proximity reader is an AUTOBUS interface which gives secured access. An access card or key tag, held briefly in front of the proximity reader, gives access (if allowed). Beside of unlocking a door or opening a gate, the system can activate any other home automation function. The person can be in the system as a member of a group like 'family', 'employee', 'gardener', etc. ...which all have specific group rights and additional functions. The door opens and specific lights are activated (if dark), room temperature settings can be changed, wall sockets activated, email /SMS sent to xyz, etc... TELETASK offers security with extra smart controls and access logging information stored for later use in a computer sheet (e.g. employee registration)..

APPLICATION

For a safe contactless access control in combination with any other control of a domotic function. Cards and key holder TAGs can have limited access: between certain hours of the days, only on certain days or any other condition that you want.

CHARACTERISTICS

General

The proximity reader fits the needs and protection for indoor installation. In outdoor application it is necessary to seal the back with silicone (between back and wall) against water infiltration at the AUTOBUS connector.

Adding, deleting and changing the access parameters of each proximity card/TAG is possible using PROSOFT V2.74 or higher (with the integrated CARDSOFT software).

Cleaning

Use only dry microfiber cloth. Never use liquids or solvents!

LED Feedback

TDS12142xx Connected: LED blinks slowly
Connection error: LED blinks fast
Card or TAG detected: LED will be ON for 2 sec

The PORTA app

All access events are logged in real time and stored in the central unit memory. With the access app (PORTA or replaced by ATMOS app from Q4 2022), the owner can check the given and denied access events on his smartphone, tablet and pc. The PORTA app gives you all the necessary access information.

! For privacy reasons, by default, the family members are not logged by the TELETASK system, but you can activate the access log of individuals when you like.

! Important: The local privacy regulations need to be checked by the system integrator to make sure that the individual app configuration complies with them.

Configuration

Via PROSOFT Suite 2.74 or higher.

AUTOBUS address

Through rotary switches Tens + Units

Jumpers

Terminating resistor (supplied with the central unit). To be used when the interface is at the physical end of the AUTOBUS cable.

INSTALLATION

On-wall mounting in front of any wall box or hole, to contain the AUTOBUS cable and connector.

When the proximity reader is placed in unsheltered outside locations it is necessary to add silicone between the wall and the housing as shown in the mounting drawing.

! **This proximity reader auto calibrates itself immediately after power up. Therefore, always disconnect the (central) AUTOBUS for 5 seconds after final installation without removing the device from the wall.**

! **The mounting distance between two proximity readers should be 1 meter minimal. Also when two readers are placed back-to-back on a wall, this is an important minimum.**

SETTINGS

Jumpers

Jumpers Terminating resistor (supplied with the central unit). To be used when the interface at the physical end of the AUTOBUS cable.

CONNECTIONS

AUTOBUS

AUTOBUS connector set + (supplied with the interface). 12V (supplied by the AUTOBUS - minimum 9V). Can be checked in PROSOFT diagnostics.

POWER CONSUMPTION

Max. 50 mA

DIMENSIONS

TDS12142PN

115 H x 115 W x 15 D (mm) (on top of the wall)
Radius edges: 13mm

TDS12142GL and TDS12142GB

115 H x 115 W x 18 D (mm) (on top of the wall)
Radius edges: 13mm

NET | GROSS WEIGHT

TDS12142PN

0,137 | 0,247 kg

TDS12142GL and TDS12142GB

0,147 | 0,257 kg

PACKAGING CONTENT

TDS12142xx
AUTOBUS connector set

STORAGE

Temperature

-20°C to +65°C

Relative humidity

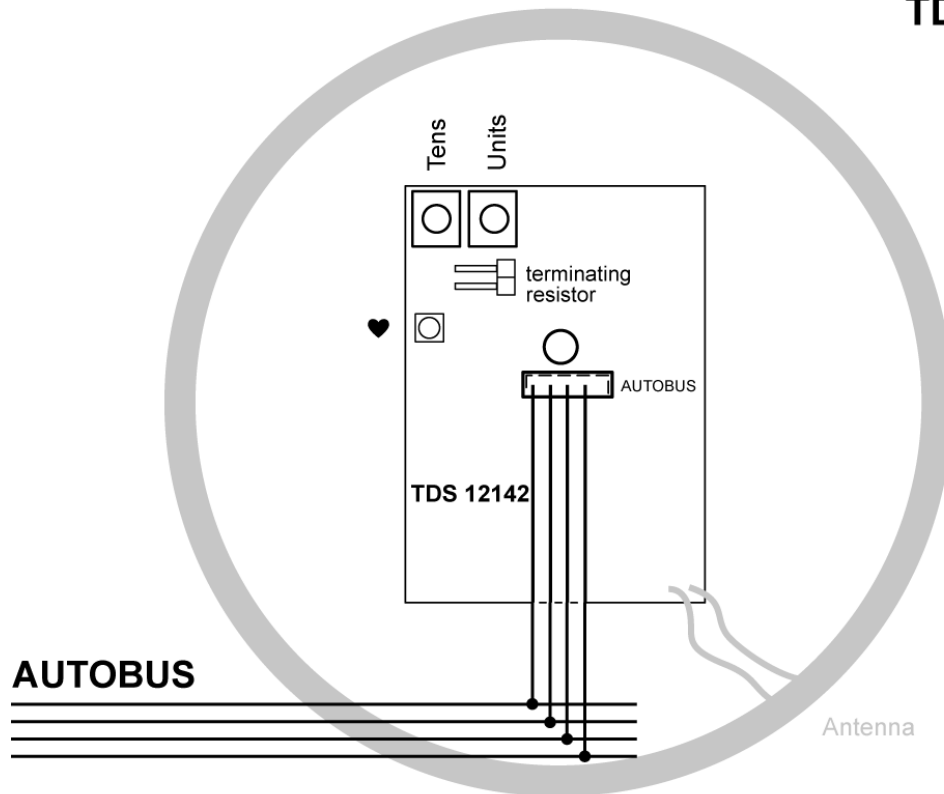
15% to 85%

IP PROTECTION RATE

IP44 (Follow the mounting instructions to seal the housing at the correct way!)

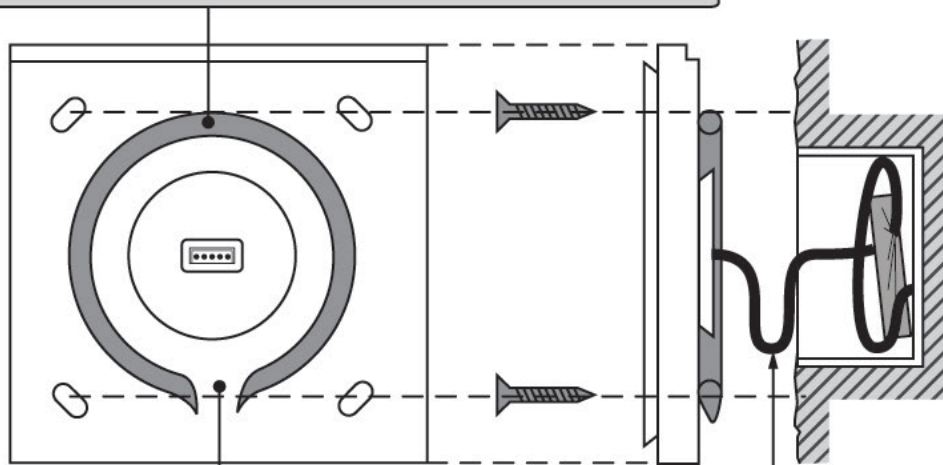
SCHEMATIC DRAWING

TDS 12142



TDS12142

When TDS12142 is placed outside at an unsheltered location, you need to seal the housing at the back by adding silicone between the wall and the back, before mounting it on the wall.

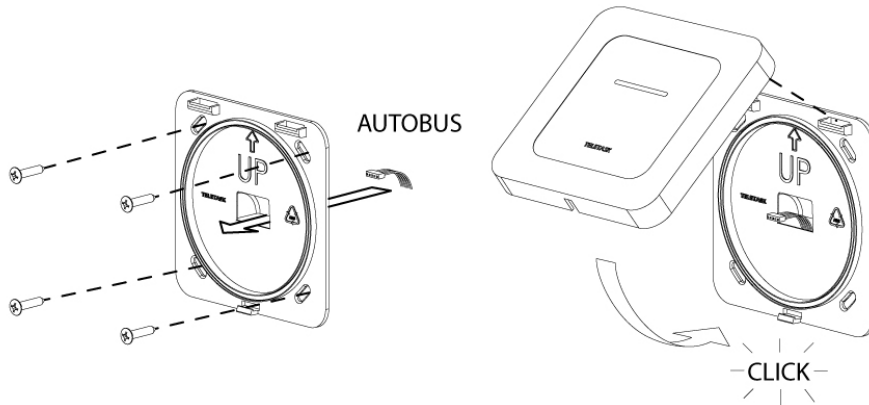


Leave an opening at the bottom of the silicone ring against condensation.

Make sure the cabling makes a down oriented U-turn before the connector is connected to the print.

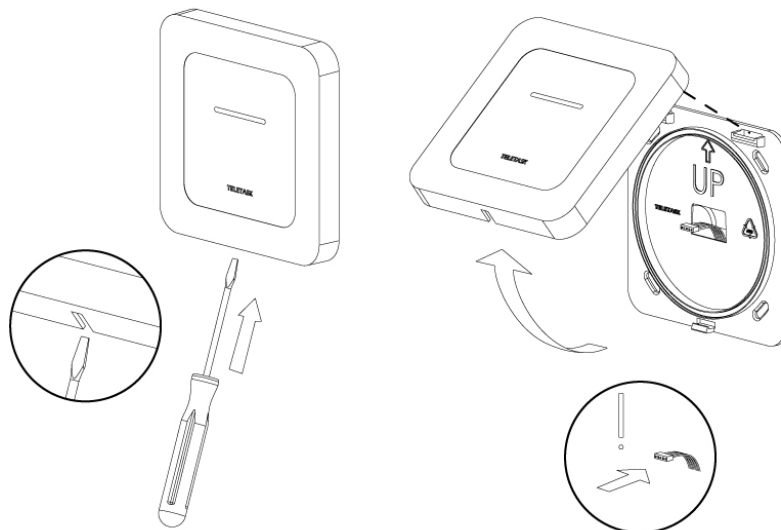
INSTALLATION

TDS12142



DISASSEMBLY

TDS12142



PRODUCT FAMILY



TDS12142PN

TDS12142GL

TDS12142GB